

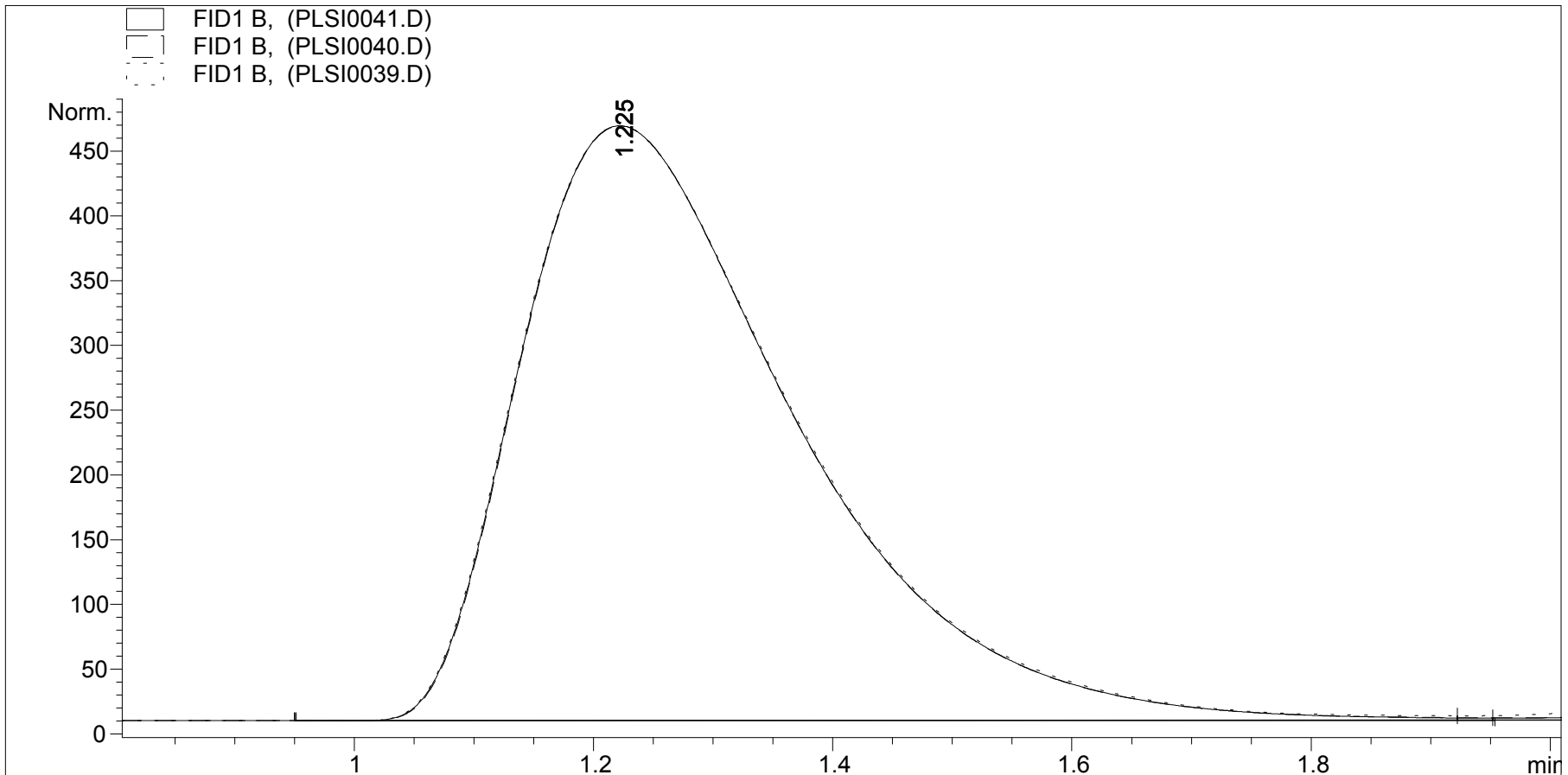
# Comparison of Speed of injection

With actuation pressure at : 90 psig (39), 70 psig (41), and 45 psig (40)

Note: change in speed of injection results in no change in chromatographic profile

Chromatogram courtesy of Dow Chemical Canada, Analytical Sciences;

Jim Luong and Ronda Gras

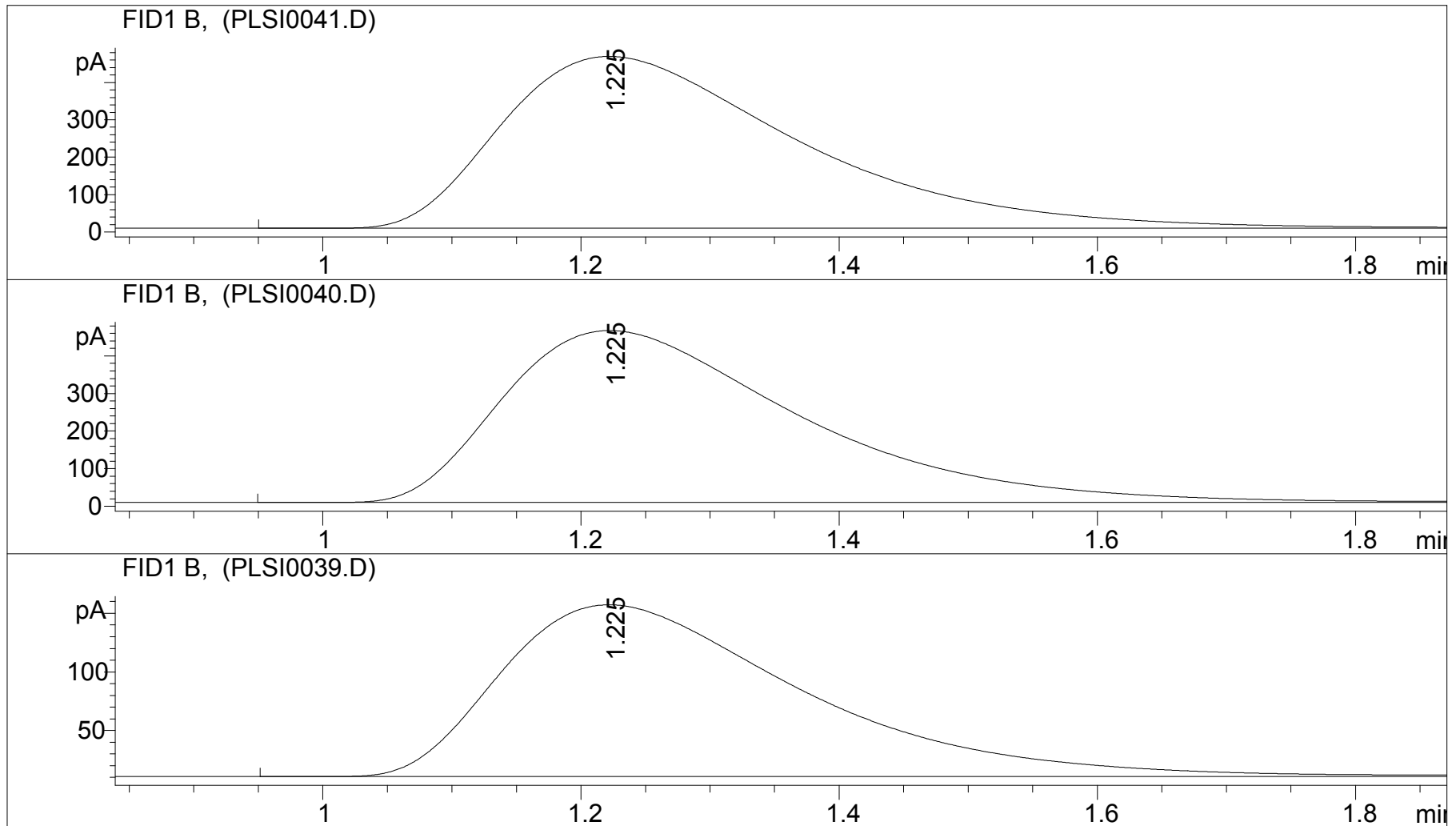


# Comparison of actuator pressure

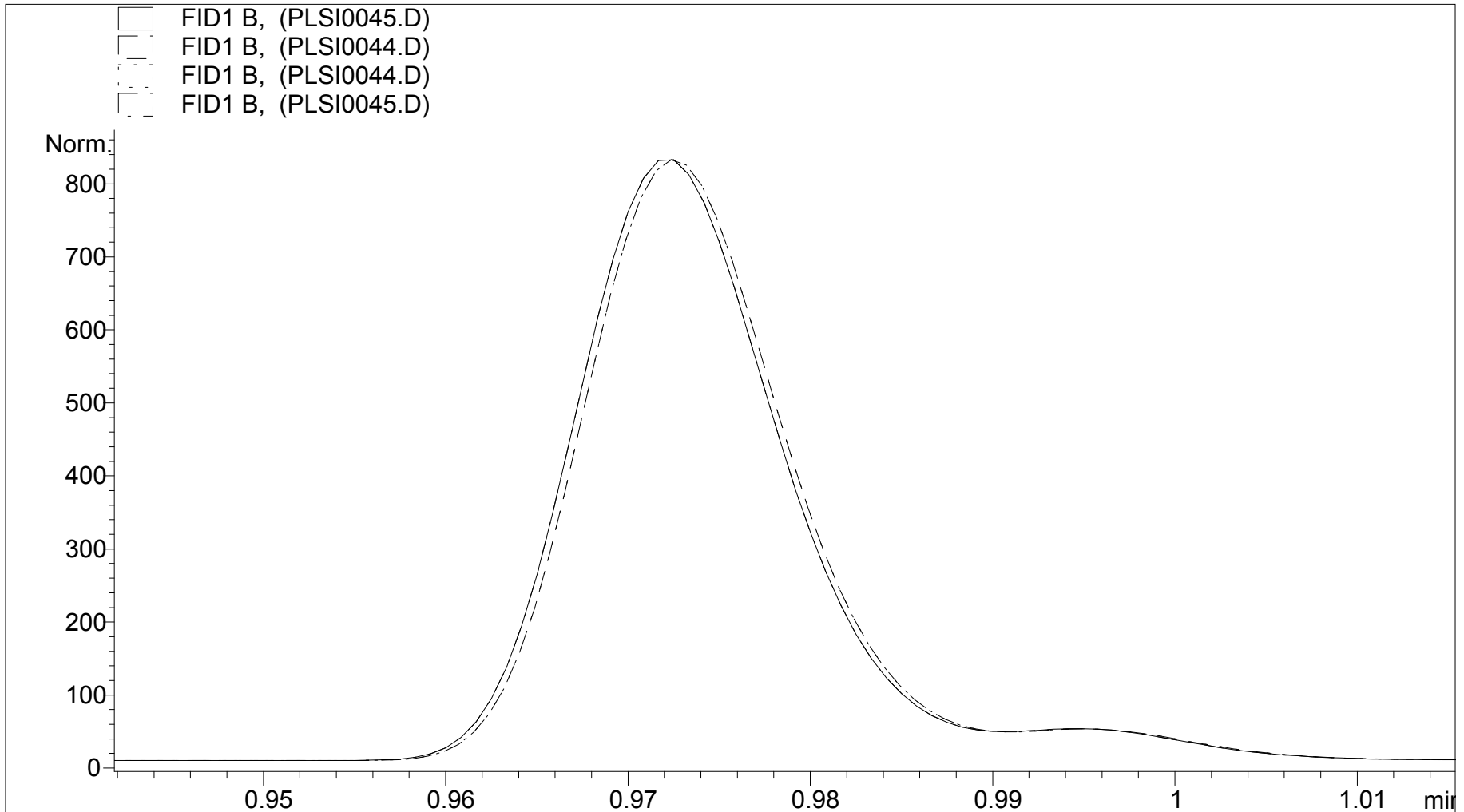
(speed of injection) at 90 psig, 70 psig and 45 psig – **no difference in chromatography**

Chromatogram courtesy of Dow Chemical Canada, Analytical Sciences;

Jim Luong and Ronda Gras



Comparison of peak profile on speed of injection: Actuator pressure 90 psig (44) vs. 65 psig (45); 30:1 split (total flow 100 mL/min) **No noticeable change in peak profile**  
Chromatogram courtesy of Dow Chemical Canada, Analytical Sciences;  
Jim Luong and Ronda Gras



Comparison of peak profile on speed of injection: Actuator pressure 90 psig (44) vs. 65 psig (45); 30:1 split (total flow 100 mL/min) **No noticeable change in peak profile**  
Chromatogram courtesy of Dow Chemical Canada, Analytical Sciences;  
Jim Luong and Ronda Gras

