

PLIS Precision

PLIS Quantitative Repeatability

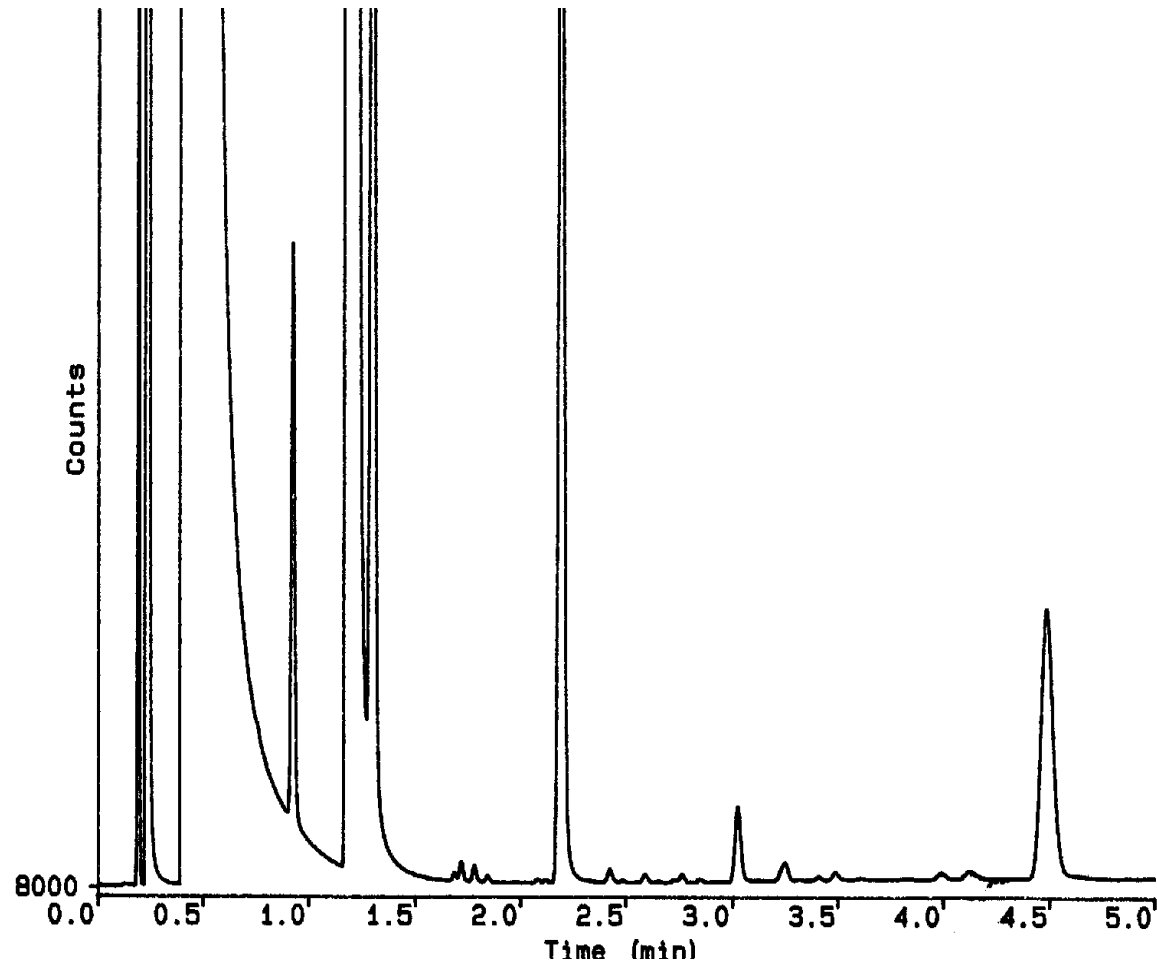
Natural Gas 2 ul Injection

Area Counts

Inj #	Ethane	Propane	i-Butane
1	121754	39884	10916
2	123649	40520	11033
3	121831	40223	10939
4	123160	40371	10933
5	122336	40152	10885
6	121277	39571	10763
7	120943	39479	10708
8	121000	39534	10700
9	120826	39492	10699
10	120956	39182	10610
11	119346	38687	10449
12	120108	38830	10510
13	121442	39213	10535
14	120292	39002	10494
15	121420	39315	10533
16	122217	39382	10568
17	122473	39489	10636
18	120791	38955	10488
19	120275	38846	10417
20	118799	38182	10270
Average	121245	39415	10654
Standard Deviation	1194.5	598.7	205.4
% RSD	1.0	1.5	1.9
Relative Precision at 95%	2.2	3.3	4.2

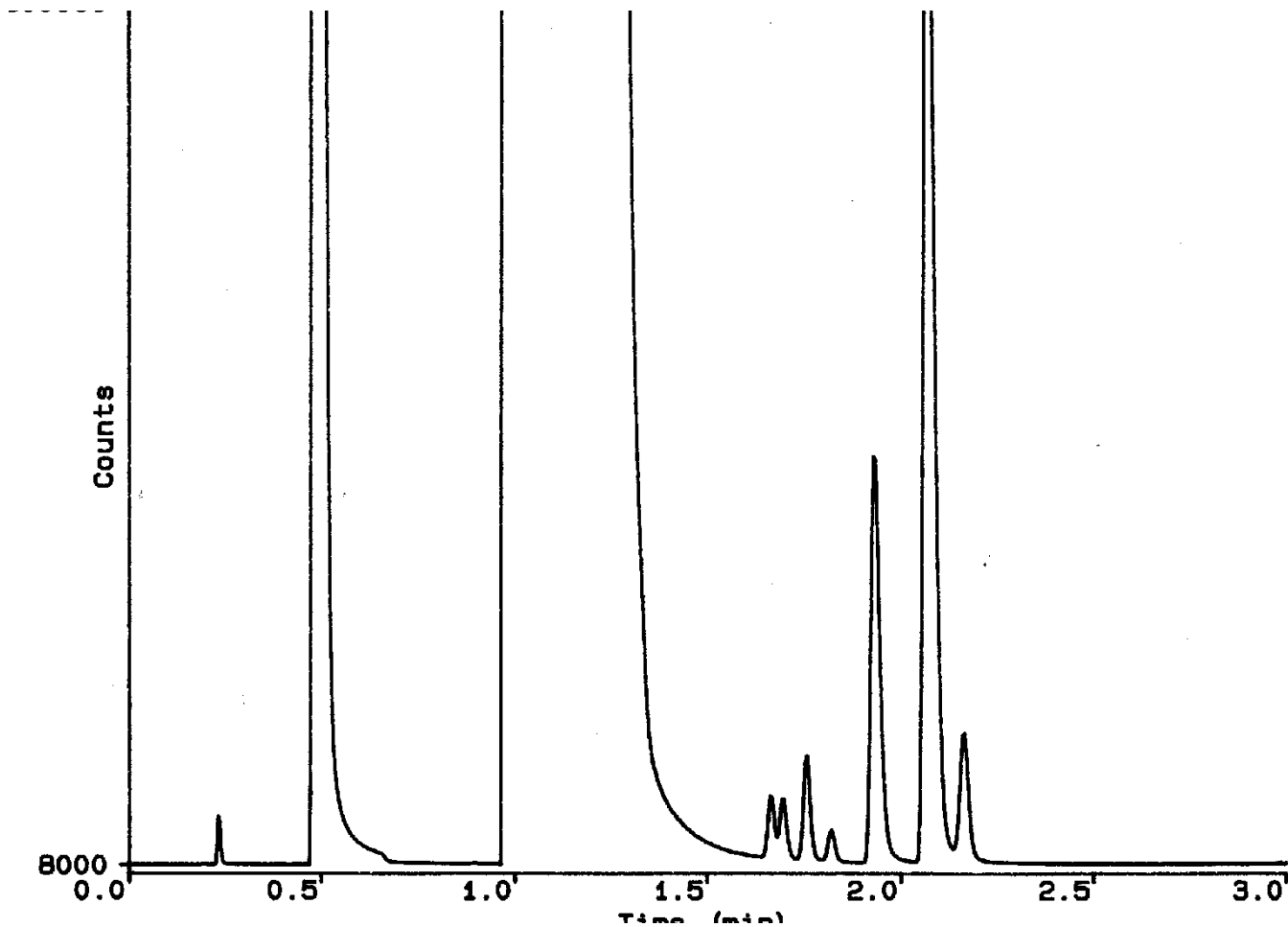
Commercially available propane (800 psig) by PLIS/GC/FID

Chromatogram courtesy of Dow Chemical Canada, Western Canada Operations, Analytical Sciences,
Jim Luong and Ronda Gras



Commercially available butane – (600 psig) by PLIS/GC/FID

Chromatogram courtesy of Dow Chemical Canada, Western Canada Operations, Analytical Sciences,
Jim Luong and Ronda Gras



Commercially available ethane – (1000 psig) PLIS/GC/SCD

Chromatogram courtesy of Dow Chemical Canada, Western Canada Operations, Analytical Sciences,
Jim Luong and Ronda Gras

